

MVP Studies

For Marching Band

winds by: John M. Meehan
percussion by: Vinnie Angelo

Exercise #1

Exercise #1 is a 32-measure piece in 4/4 time. The notation is written on a single staff in treble clef. The key signature has one flat (Bb). The melody consists of eighth and quarter notes, often beamed in pairs. Measures 1-8: G4, A4, Bb4, C5, D5, E5, F5, G5. Measures 9-16: G5, F5, E5, D5, C5, Bb4, A4, G4. Measures 17-24: G4, A4, Bb4, C5, D5, E5, F5, G5. Measures 25-32: G5, F5, E5, D5, C5, Bb4, A4, G4. Measure numbers 9, 15, 21, and 25 are indicated at the start of their respective staves.

Exercise #2

Exercise #2 is a 32-measure piece in 4/4 time. The notation is written on a single staff in treble clef. The key signature has one flat (Bb). The melody consists of eighth and quarter notes, often beamed in pairs. Measures 1-8: G4, A4, Bb4, C5, D5, E5, F5, G5. Measures 9-16: G5, F5, E5, D5, C5, Bb4, A4, G4. Measures 17-24: G4, A4, Bb4, C5, D5, E5, F5, G5. Measures 25-32: G5, F5, E5, D5, C5, Bb4, A4, G4. Measure numbers 1, 9, 15, 21, and 27 are indicated at the start of their respective staves.

MVP Studies
*For Marching Band***Exercise #3**

Exercise #3 is a 16-measure piece in 4/4 time. It begins with a treble clef and a key signature of one flat (Bb). The notation is as follows:

- Measure 1: Quarter note G4, quarter note A4, quarter note B4, quarter note C5. (Measure number 1 below staff)
- Measure 2: Quarter note B4, quarter note A4, quarter note G4, quarter note F#4. (Measure number 7 below staff)
- Measure 3: Quarter note E4, quarter note D4, quarter note C4, quarter note B3. (Measure number 13 below staff)
- Measure 4: Quarter note A3, quarter note G3, quarter note F3, quarter note E3. (Measure number 13 below staff)
- Measure 5: Quarter note D3, quarter note C3, quarter note B2, quarter note A2. (Measure number 13 below staff)
- Measure 6: Quarter note G2, quarter note F2, quarter note E2, quarter note D2. (Measure number 13 below staff)
- Measure 7: Quarter note C2, quarter note B1, quarter note A1, quarter note G1. (Measure number 13 below staff)
- Measure 8: Quarter note F1, quarter note E1, quarter note D1, quarter note C1. (Measure number 13 below staff)
- Measure 9: Quarter note B1, quarter note A1, quarter note G1, quarter note F1. (Measure number 13 below staff)
- Measure 10: Quarter note E1, quarter note D1, quarter note C1, quarter note B1. (Measure number 13 below staff)
- Measure 11: Quarter note A1, quarter note G1, quarter note F1, quarter note E1. (Measure number 13 below staff)
- Measure 12: Quarter note D1, quarter note C1, quarter note B1, quarter note A1. (Measure number 13 below staff)
- Measure 13: Quarter note G1, quarter note F1, quarter note E1, quarter note D1. (Measure number 13 below staff)
- Measure 14: Quarter note C1, quarter note B1, quarter note A1, quarter note G1. (Measure number 13 below staff)
- Measure 15: Quarter note F1, quarter note E1, quarter note D1, quarter note C1. (Measure number 13 below staff)
- Measure 16: Quarter note B1, quarter note A1, quarter note G1, quarter note F1. (Measure number 13 below staff)

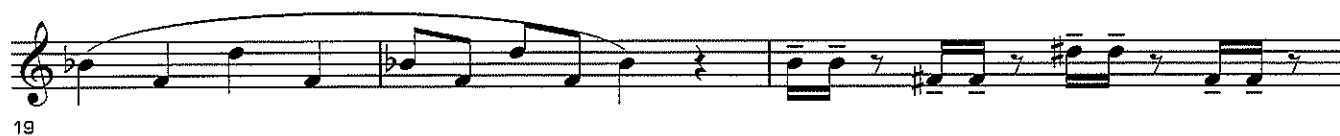
Exercise #4

Exercise #4 is a 16-measure piece in 4/4 time. It begins with a treble clef and a key signature of one flat (Bb). The notation is as follows:

- Measure 1: Quarter note G4, quarter note A4, quarter note B4, quarter note C5. (Measure number 1 below staff)
- Measure 2: Quarter note B4, quarter note A4, quarter note G4, quarter note F#4. (Measure number 7 below staff)
- Measure 3: Quarter note E4, quarter note D4, quarter note C4, quarter note B3. (Measure number 11 below staff)
- Measure 4: Quarter note A3, quarter note G3, quarter note F3, quarter note E3. (Measure number 11 below staff)
- Measure 5: Quarter note D3, quarter note C3, quarter note B2, quarter note A2. (Measure number 11 below staff)
- Measure 6: Quarter note G2, quarter note F2, quarter note E2, quarter note D2. (Measure number 11 below staff)
- Measure 7: Quarter note C2, quarter note B1, quarter note A1, quarter note G1. (Measure number 11 below staff)
- Measure 8: Quarter note F1, quarter note E1, quarter note D1, quarter note C1. (Measure number 11 below staff)
- Measure 9: Quarter note B1, quarter note A1, quarter note G1, quarter note F1. (Measure number 11 below staff)
- Measure 10: Quarter note E1, quarter note D1, quarter note C1, quarter note B1. (Measure number 11 below staff)
- Measure 11: Quarter note A1, quarter note G1, quarter note F1, quarter note E1. (Measure number 11 below staff)
- Measure 12: Quarter note D1, quarter note C1, quarter note B1, quarter note A1. (Measure number 11 below staff)
- Measure 13: Quarter note G1, quarter note F1, quarter note E1, quarter note D1. (Measure number 11 below staff)
- Measure 14: Quarter note C1, quarter note B1, quarter note A1, quarter note G1. (Measure number 11 below staff)
- Measure 15: Quarter note F1, quarter note E1, quarter note D1, quarter note C1. (Measure number 11 below staff)
- Measure 16: Quarter note B1, quarter note A1, quarter note G1, quarter note F1. (Measure number 11 below staff)

MVP Studies

For Marching Band



Exercise #11



MVP Studies
For Marching Band

17



21



25

Exercise #12

1



7



10



13



16



19



22

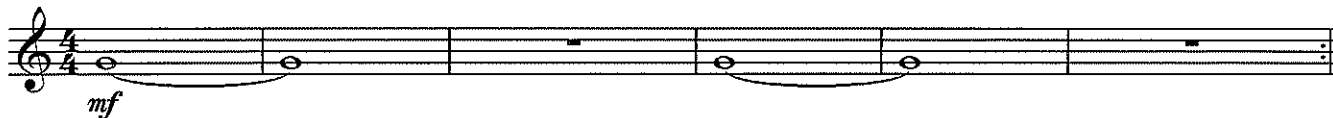
MVP Studies

For Marching Band

[Wind Only Supplement]

winds by: John M. Meehan

Exercise A



Exercise B



Exercise C



Exercise D



Exercise E



MVP Studies*For Marching Band*
(Wind Only Supplement)

7



10



13



16



19



22

Exercise F

1



5



9

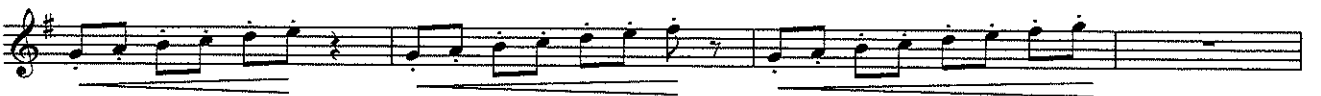
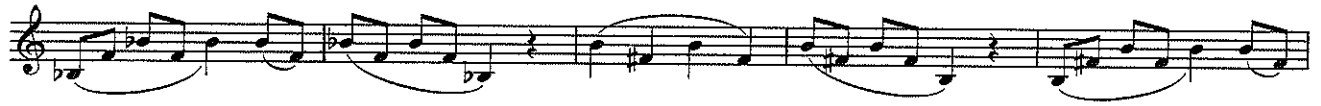


13

Progression #2

Trpt 2&3
Xtreme Technique Warm Up

Composed By: Wayne R. Downey



Trpt 2&3
XtremeTechnique Warm Up

Composed By: Wayne R. Downey

